

ROLAND JX-10

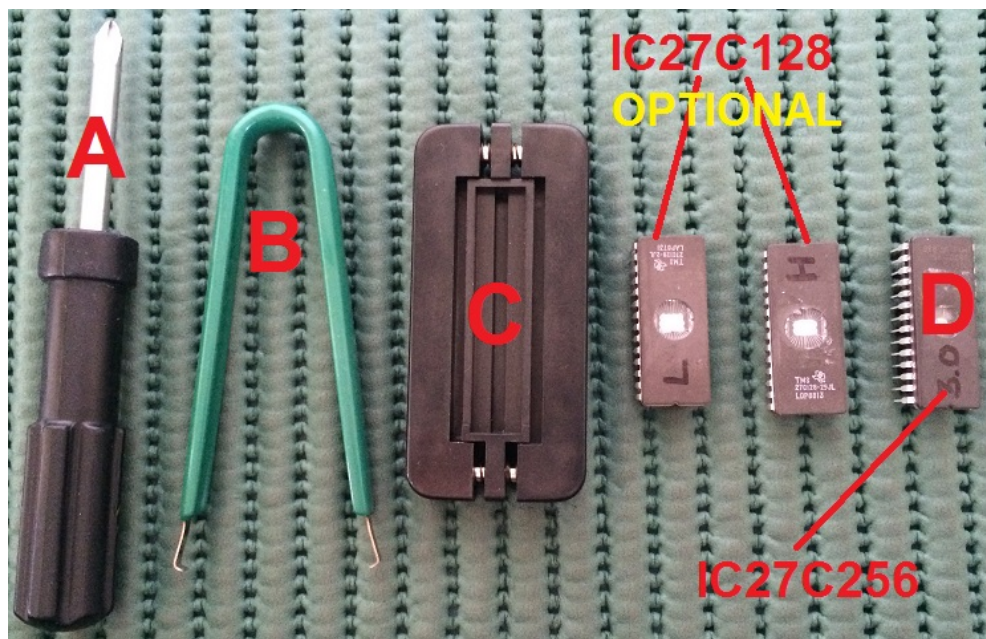
EPROM A – REPLACEMENT SOUND BOARD EPROM HI – LO Optional

In this brief guide will be explained how to upgrade Roland JX-10 replacing the EPROM placed on the *Assigner board*. To accomplish this elementary operation you'll need:

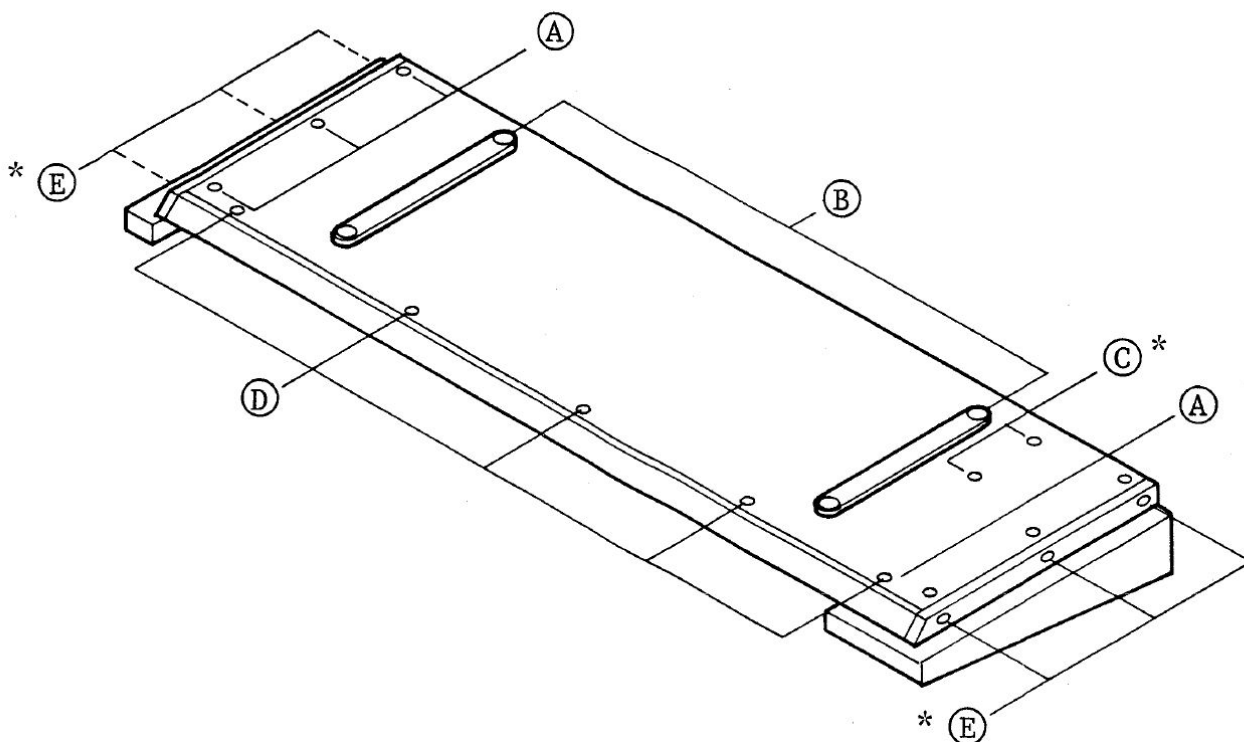
- A: Phillips screwdriver
- B: IC Extractor
- C: IC Integrated Circuit Leg Straightener Tool
- D: EPROM A ver. 3.0

The optional EPROM High and Low can be placed, respectively, on Upper and Lower Sound Board.

For further information about EPROM High and Low, please write to:
jx_sales@vecoven.com



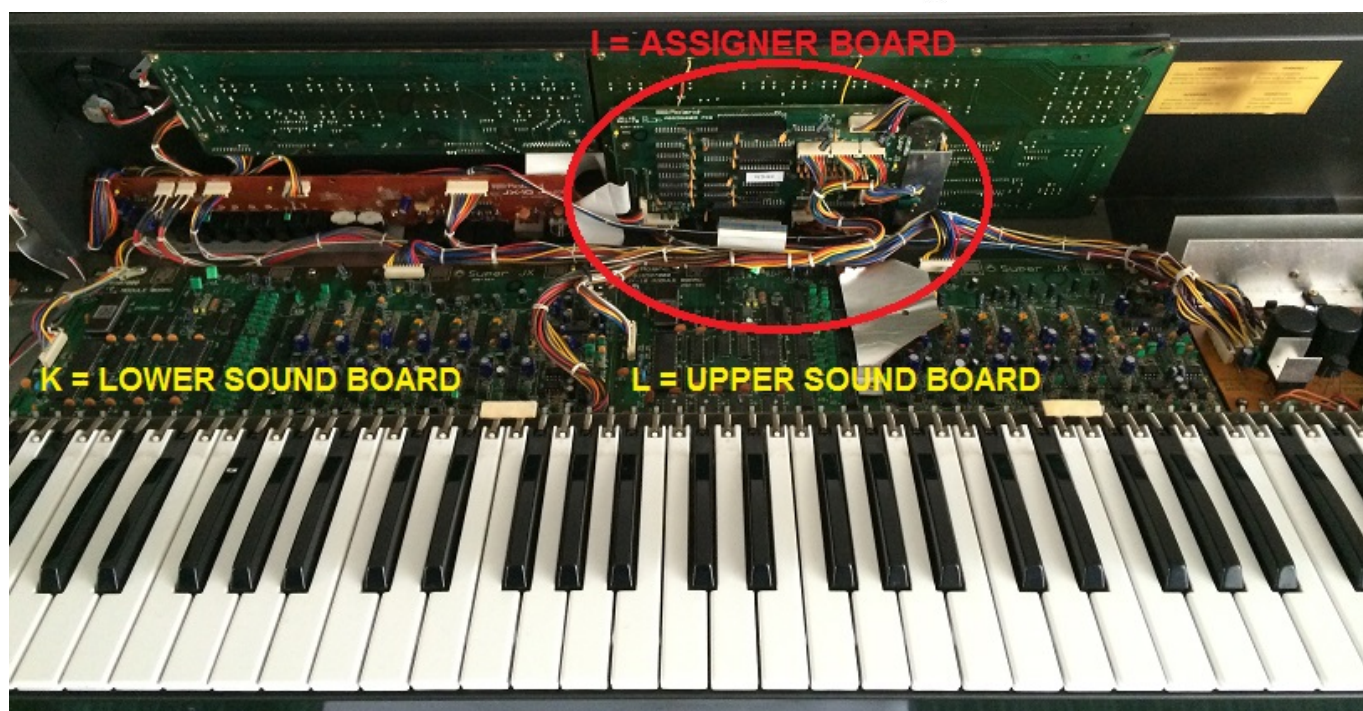
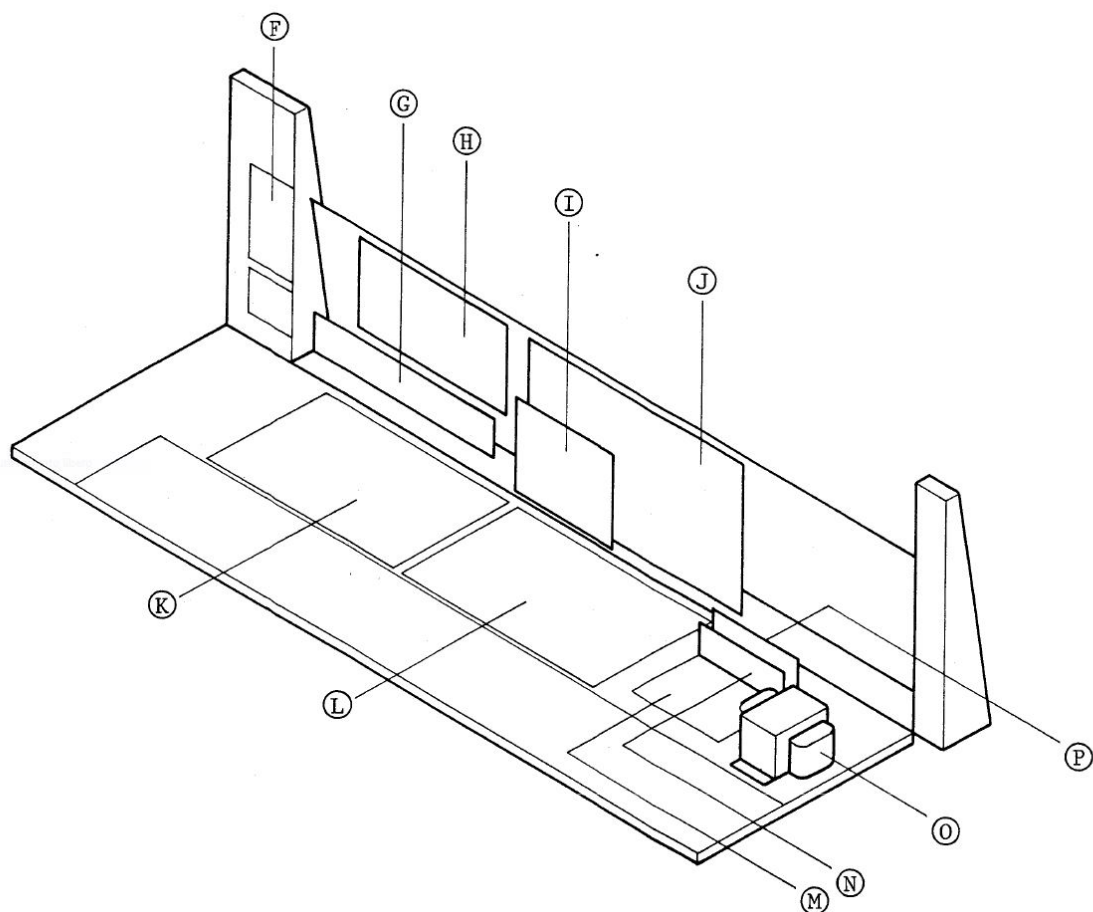
To open the JX-10, please look at the following scheme:



Panel removal screws are * E and * C

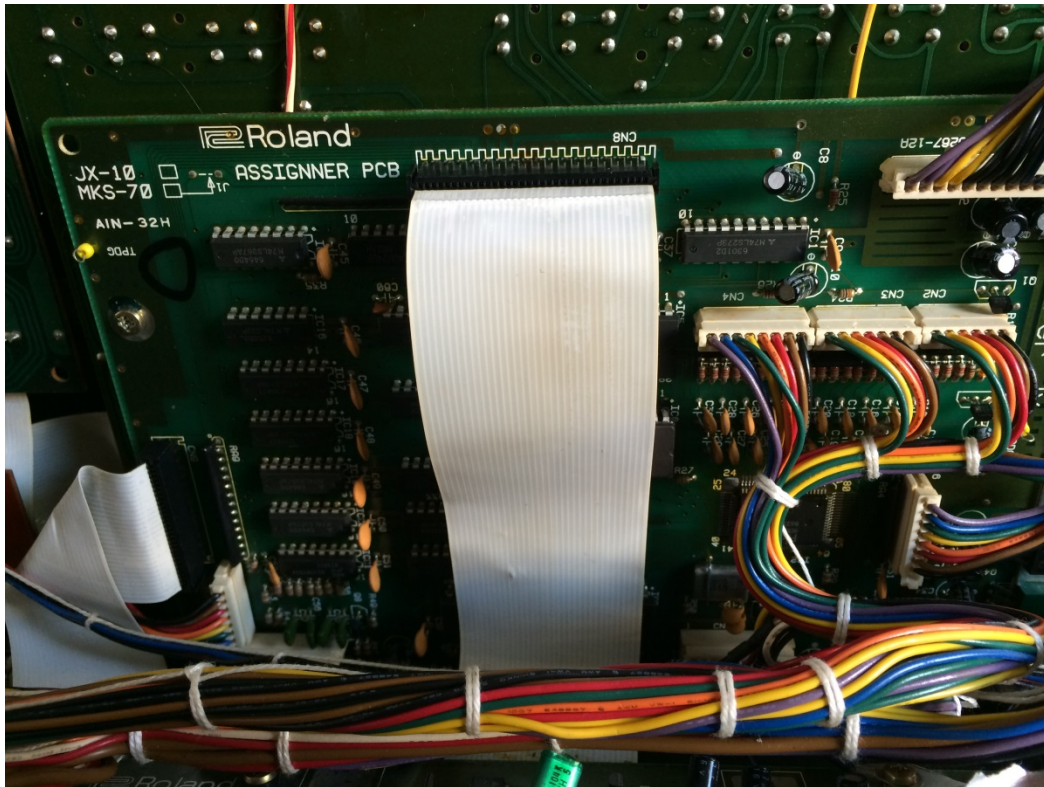
Unscrew * C first, then * E (left or right is not influential). At this point the upper panel can be raised up. Be careful to lift up gently the cover and stop when a resistance is detected. This means that the cover is open at its full.

Once opened JX-10, please look at the following scheme:

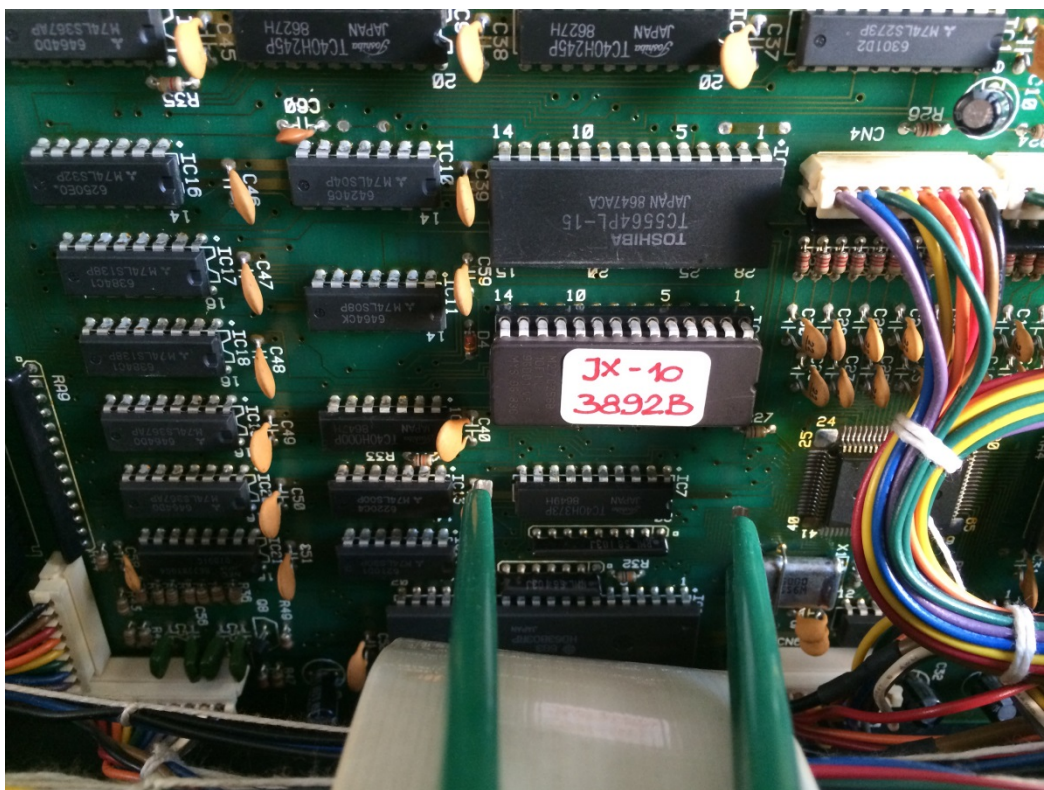


EPROM A replacement will take place on I = ASSIGNER BOARD (circled in red).

Optional EPROM High and Low replacement will, in case, take place on K = LOWER SOUND BOARD and L = UPPER SOUND BOARD with similar operation.

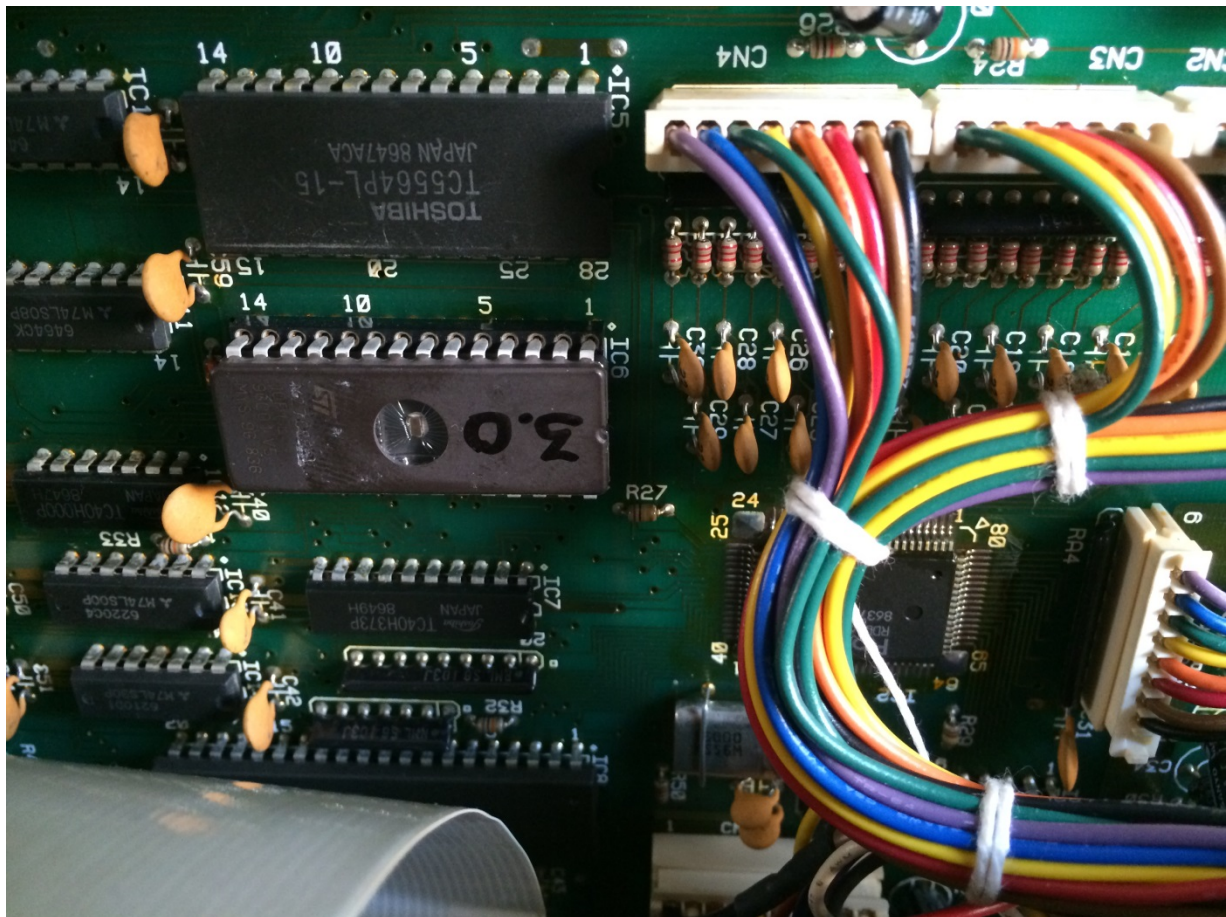


Be careful to lift **gently** the white flat cable that hides EPROM A



Remove EPROM A as much kindly as before with "B" IC Extractor – *the picture shows a recent Beta version.*

If needed, use tool C "IC Integrated Circuit Leg Straightener Tool" to straighten possibly bent pins or to adapt pins to the base.



- Place the new EPROM A ver. 3.0 – *respecting the same placing direction*
- Reconnect **gently** the white flat cable again
- Close JX-10 upper panel, fasten * C and * E screws then reconnect power cable and turn on JX-10
- If EPROM A was correctly installed, the JX-10 display will show:



This guide © 2014 wavesequences@gmail.com All rights reserved. Duplication in any manner is strictly prohibited.